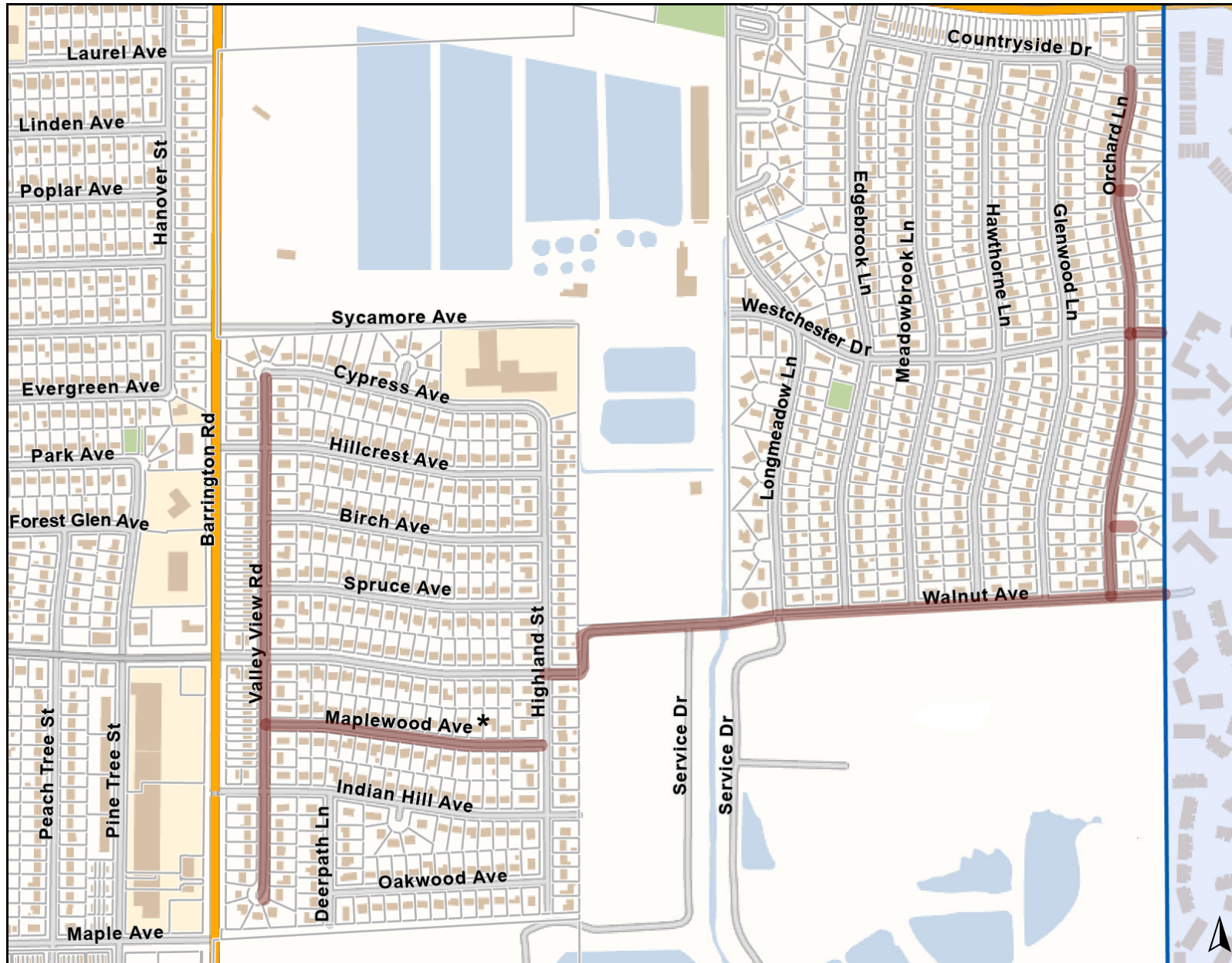
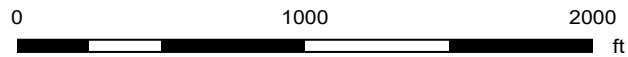


# GIS Consortium | Resurfacing & Watermain Project



## Legend

- Additional Streets
- \* Watermain Improvements  
Maplewood Ave



Print Date: 5/3/2021

## Notes

Disclaimer: The GIS Consortium and MGP Inc. are not liable for any use, misuse, modification or disclosure of any map provided under applicable law. This map is for general information purposes only. Although the information is believed to be generally accurate, errors may exist and the user should independently confirm for accuracy. The map does not constitute a regulatory determination and is not a base for engineering design. A Registered Land Surveyor should be consulted to determine precise location boundaries on the ground.